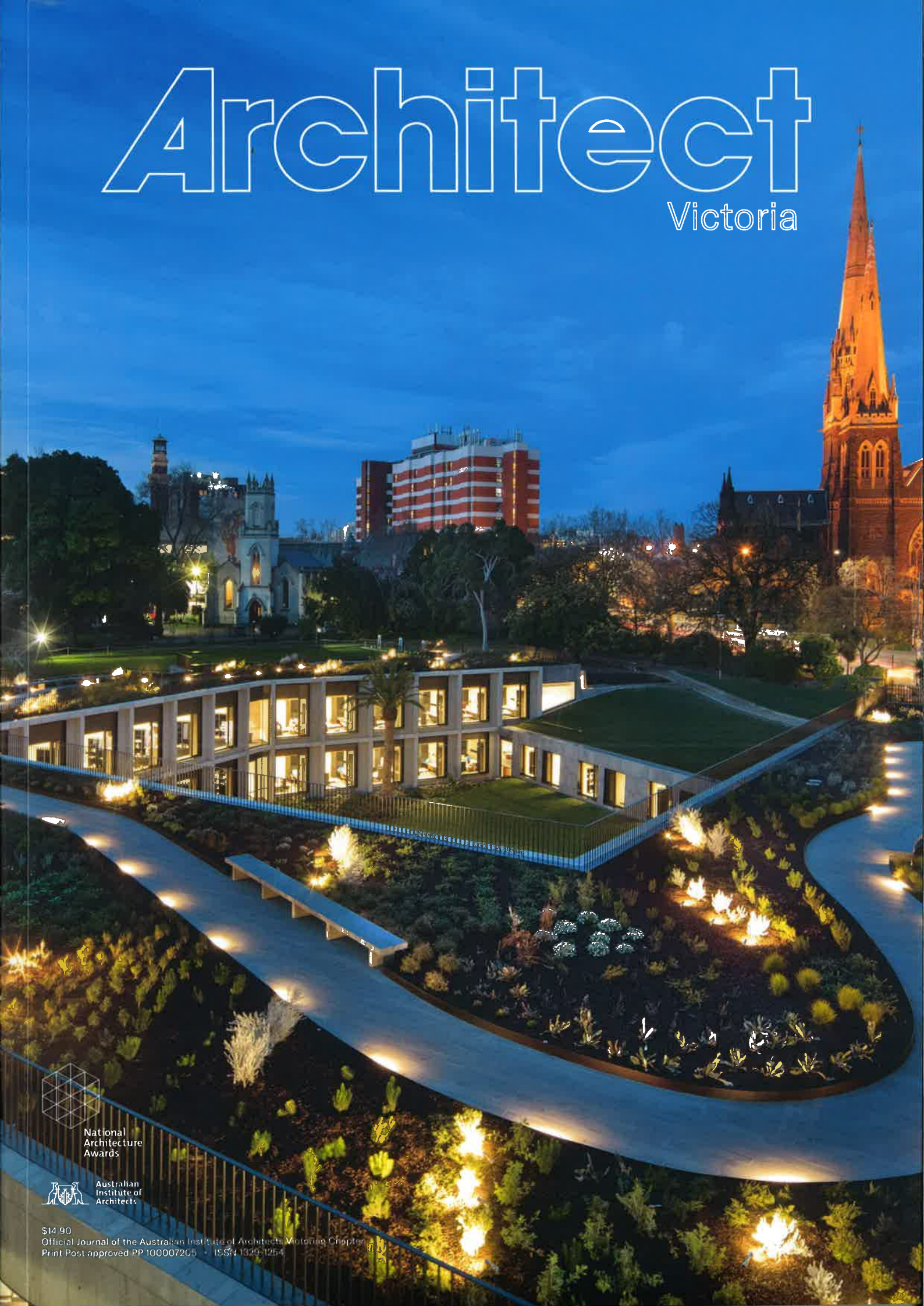


Architect

Victoria

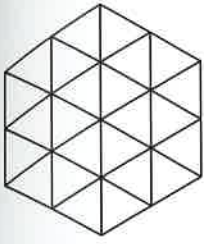


National
Architecture
Awards



Australian
Institute of
Architects

\$14.90
Official Journal of the Australian Institute of Architects, Victorian Chapter
Print Post approved PP 100007205 • ISSN 1323-1254



NATIONAL AWARD CATEGORIES

AWARDS CRITERIA

The core judging criteria applicable across all categories covers the areas of:

Conceptual framework

Public and cultural benefits

Relationship of built form to context

Program resolution

Integration of allied disciplines

Cost/value outcome

Sustainability

Response to client and user needs

AWARD TYPES

NAMED AWARDS

The most outstanding project submitted in each category is awarded a Named Award. The Named Award bears the name of an architect whose contribution in a specialist area is still highly regarded. There is only one winner of the Named Award in each category in any year.

ARCHITECTURE AWARDS

Architecture Awards are awarded in each category to projects of excellence that demonstrate consummate architectural skill and make a valuable contribution to the advancement of architecture in Victoria. There is no restriction on the number of Architecture Awards a jury may grant.

COMMENDATIONS

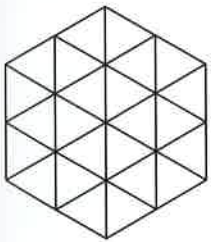
Commendations are awarded in each category to projects of special merit which demonstrate significant architectural skill. There is no restriction on the number of Commendations a jury may grant.

NATIONAL ARCHITECTURE AWARDS

Projects awarded Named and Architecture Awards in each state progress to the National Architecture Awards forming the field of entries considered by the National jury for National Architecture Awards.

Sacred Heart Building, Abbotsford, Convent Foundation | Kelsim Thompson Architecture | Photos by Kelsim Thompson





HERITAGE ARCHITECTURE

This category is for any built conservation project or study developed in accordance with the Australia ICOMOS Burra Charter, or any adaptive reuse of a heritage structure.



Matt Gibson
Jury Chair



Janet Beeston
Juror



Vicki McLean
Juror

Category Sponsor



The Heritage Council of Victoria values Victoria's heritage as an asset to be enjoyed and appreciated by all and we are proud to sponsor the Heritage Architecture category at the 2019 Victorian Architecture Awards

We advise the government and others on how to conserve and protect historically important objects and places for the enjoyment of current and future generations.

We are an independent statutory body and we provide legal protection for places and objects that are important to the history and development of Victoria



HERITAGE ARCHITECTURE



JOHN GEORGE KNIGHT AWARD | Sacred Heart Building Abbotsford Convent Foundation | Kerstin Thompson Architects

In a year where the Heritage category has been redefined into sub definitions of Conservation and Creative Adaptation, this project offered an exemplary representation of both. Included on the National Heritage List, the Sacred Heart Building (formerly Magdalene Asylum) holds an important place in Australia's social welfare history.

Assisting the Abbotsford Convent Foundation, KTA successfully repurposed the abandoned buildings in a highly uplifting acknowledgement of the site's past. Honoring the lives of the women and girls who lived and worked there, while reprogramming the site as a centre for community, arts and culture.

Containing a palpable sense of history, a tribute to the architect's light touch, the approach is one of minimal intervention and legibility. Working with several heritage experts, the process involved an elaborate and rigorous conservation approach. Avoiding the temptation to unify the resultant architecture KTA chose to reveal and expose, contributing to interpretation, the heightening of meaning and providing a human point of reference.

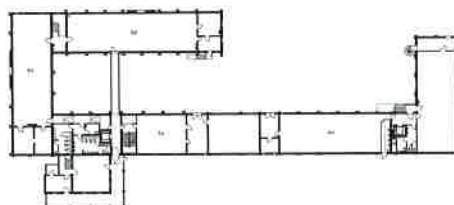
A heavier hand would have inscribed a more pronounced newness. The approach here is one of balance and appropriateness. The new incarnation of creative workplaces, learning and artisan retail spaces is cleverly orchestrated, symbiotic and sustainable. Allowing flexibility to adapt, evolve and incarnate again.

Practice Team: Kerstin Thompson, Erica Diakoff, Scott Diener, William Samuels

Consultant / Construction Team: Stephen Rogers (Project Manager), Scott Walker (Project Coordinator), Greg Broadhead (Site Manager), Kersulting (Structural Engineer), Umow Lai (Building Services), Marshall Day (Acoustic Engineer), Bryce Raworth (Heritage Consultant), Hendry Group Pty Ltd (Building Surveyor), Harlock Consulting (Quantity Surveyor)

Builder: FDC Construction & Fitout

Photographer: Derek Swalwell







COMMENDATION

Albert Park College Liberal Arts Centre | Jackson Clements Burrows Architects



Photographer: Peter Clarke

This project is an important and successful example of creative thinking about public heritage assets and adaptive reuse. The complex celebrates heritage values at the same time as providing a contemporary facility to match the school's progressive approach to education.

The Albert Park College Liberal Arts Centre demonstrates the positive outcomes that can be achieved with a collaborative approach by architect and building users. The challenges of site contamination and existing built form have been holistically embraced and used to inform the design of the new additions, resulting in a complex that is highly valued by the students, staff and the wider community.

Builder: Existing Building Works (Stage 1): Neo Construct New Build and Landscaping (Stage 2): Stokes Rousseau

Parliament of Victoria Members' Annexe | Peter Elliott Architecture + Urban Design



Photographer: John Gollings

This project is notable for its strong but considered response to one of Victoria's premier heritage sites. While navigating state level heritage controls over the existing building, the rear gardens designed by Guilfoyle, and several significant trees, the architects have skilfully addressed the requirements of a contemporary Parliament building.

The new annexe has a strong and distinct character of its own, but does not detract from the prominence of the heritage assets or interfere with views to and from the heritage precinct more generally.

Builder: Icon (formerly Cockram Construction)

Kagan House | Kennedy Nolan



Photographer: Derek Swatwell

In a time where many exemplary Mid-Century homes are being lost to flagrant demolition, this project provides an excellent example of adaption whilst retaining the tenants of its heritage.

The clients' new program is cleverly retained with the existing footprint, avoiding the need for more intrusive adaption or addition, while numerous small but highly effective alterations provide considerable improvement to the living environment.

An amount of the early fabric has been replaced and a strong new language introduced. Finishes and devices are referential of the period providing a highly cohesive and evocative composition within local controls.

Builder: Weiss Builders



JURY CHAIR REPORT | HERITAGE ARCHITECTURE

A change within the Heritage category this year saw an initiative to ignite the re-emergence of 'Conservation' projects as a stream within the category. After 2018, the Vic Awards committee decided to follow the lead of NSW whom recognise Awards for the sub categories of 'Creative Adaptation' and 'Conservation'.

While the jurors contemplated that the terminology of 'Creative Adaptation' and 'Conservation' may not exactly appropriate 'heritage' projects into two clear encapsulating bundles, it provided a reasonable departure point for acknowledging Conservation projects, which make a highly valuable contribution to the built environment.

Perhaps as a result, the heritage entries more than doubled. This year twenty-six entries were submitted - fifteen 'Creative Adaptation', seven 'Conservation' and four were clearly both or neither.

The jury debated the definition of conservation and what constituted a 'true' conservation project. One shining example that was acknowledged via a shortlisting was the Royal Mint Wall Remediation by HLCD. Although this project had virtually no noticeable new intervention, it involved a highly rigorous and sensitive conservation approach to protect the brick retaining wall of the state listed asset. It delivered a project that was an exemplar of correct Burra Charter process. Even though the project was 'unseen,' as the applicant rightfully said, "it may not have been an eye catching solution but nor should it have been". It was a success this year to see projects such as this entered within the category.

Unanimous decisions were made on the three award winners - Classical Gas for its innovative creative adaptation, Flinders Street went close to winning the named award for its incredibly technically rigorous conservation, yet Sacred Heart was the overwhelming named award winner for its social importance to the community, ability to sustain its heritage as it is now and create a new heritage. It was a stand out for both its adaptive re-use and conservation components.

Category Sponsor



The Heritage Council of Victoria values Victoria's heritage as an asset to be enjoyed and appreciated by all and we are proud to sponsor the Heritage Architecture category at the 2019 Victorian Architecture Awards

We advise the government and others on how to conserve and protect historically important objects and places for the enjoyment of current and future generations.

We are an independent statutory body and we provide legal protection for places and objects that are important to the history and development of Victoria